

1

Match each clock to the correct time.

[2004]

One has been done for you.

1:45

half past ten

ten to seven

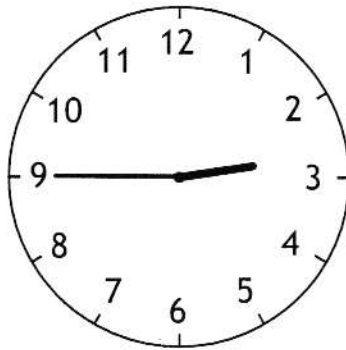
9:10

[2 marks]

2

A clock shows this time twice a day.

[2016]



Tick the two digital clocks that show this time.

03:45

02:45

09:45



21:45

14:45



[1 mark]

3

Stefan's watch shows five minutes past nine.

[2016S]

The watch is twelve minutes fast.

GO BACK 12!

IT WAS 5 PAST, NOW ITS 7 TO!

MINUTES

MINUTES



What is the correct time?

'53 PAST'!

MINUTES

8:53

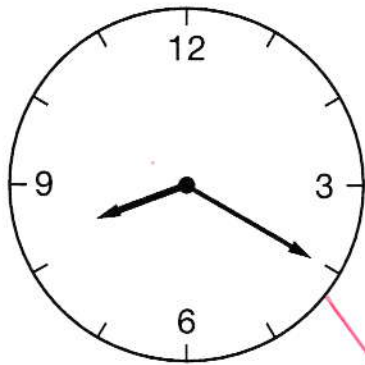
[1 mark]

4

Here are two clock faces.

[2008]

Join each clock face to the correct digital time.



9:20

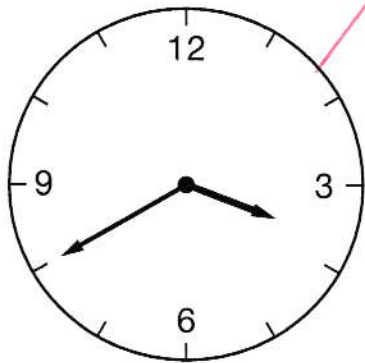
3:40

4:40

8:40

8:20

4:20



[2 marks]

5

Circle the time that is 30 minutes **before** midnight.

[2009]



12:30am

12:30pm

11:30am

11:30pm

3am

[1 mark]

6

Complete the missing times.

[Extra]

The first one is done for you.

10 o'clock in the morning

10:00

Quarter to 7 in the morning

06:45

Quarter past 7 in the evening

19:15

[ACCEPT 7:15 PM]

[1 mark]

7

A clock shows this time.

[2006]



How long is it from this time until 5pm?

1 HOUR 20 MINS

What time was it quarter of an hour before the time on the clock?

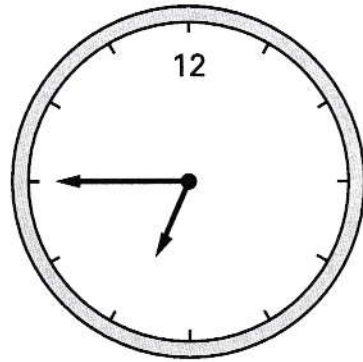
3:25 pm

[2 marks]

8

Here is a clock.

[2003]



How many minutes is it **until** this clock shows 7:30?



45 minutes

Here is another clock.

14 : 53

What time will the clock show in 20 minutes?



15:13

[2 marks]

9

What is 444 minutes in hours and minutes?

[2016S]

$$\begin{array}{r} 60 \\ \times 7 \text{ [HOURS]} \\ \hline 420 \end{array}$$

[NEED 24 MORE MINUTES]

7 hours 24 minutes

[1 mark]

10

Jack leaves for school at this time.

[Extra]



It takes him **40 minutes** to get to school.

Tick (✓) the time Jack gets to school.



[1 mark]

11

The time now is

[Extra]

06:55

I woke up **half an hour ago**.

What time was it when I woke up?

 06:25

The time now is still

06:55

I must leave for school at **7.15am**.

In how many minutes is that?

 20 minutes

[2 marks]

12

Write the missing numbers.

[2017]

60 months = years $12 \overline{)60}$

72 hours = days $24 \overline{)72}$

84 days = weeks $7 \overline{)84}$

[2 marks]

13

Write these times in order, starting with the shortest.

[2010]

$[70 \text{ DAYS}]$

$[28 - 31 \text{ DAYS}]$

$[2 \text{ DAYS}]$

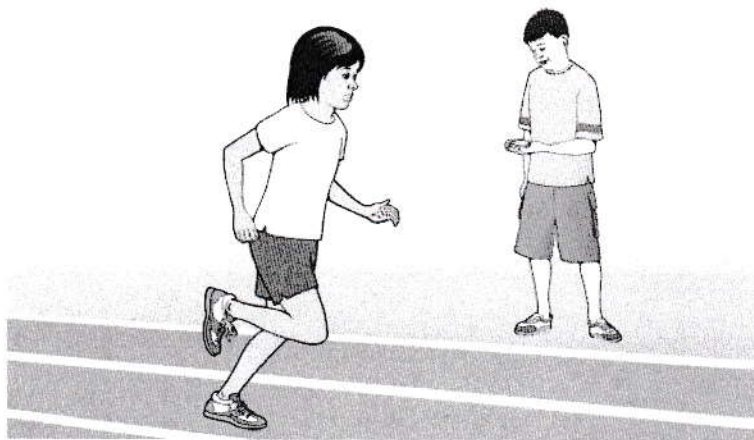


shortest

[1 mark]

14

[2012]



Kirsty ran a race in one and a half minutes.

Mina took 10 seconds longer.

90 SECONDS

How many **seconds** did Mina take to run the race?

$$90 + 10$$



100 seconds

[1 mark]

15

[2002]

One of these watches is **3 minutes fast.**

The other watch is **4 minutes slow.**



THIS MUST BE THE FAST ONE!
[50 MINUS 3]

What is the correct time?



12:02

[1 mark]

16

Put these times in order, starting with the shortest.

[2008]

5 minutes [300 seconds] 20 seconds [20 seconds] 100 seconds [100 seconds]

1 minute [60 seconds]

20 SECS 1 MINUTE 100 SECS 5 MINUTES

shortest

[1 mark]

17

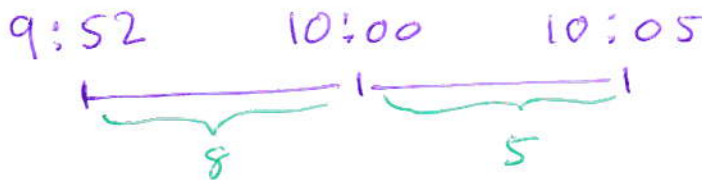
Seb has to see the doctor at 10:05 am.

[2014]

He gets to the doctor's surgery at 9:52 am.

How many minutes **early** is he?

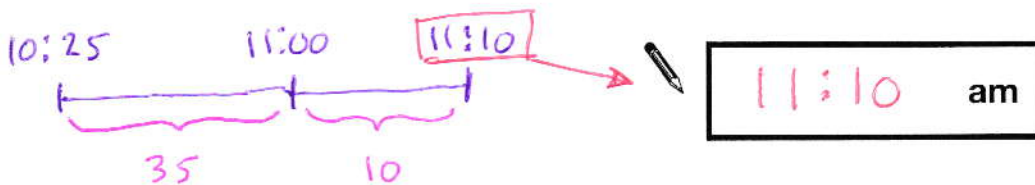
13 minutes



He leaves the doctor's surgery at 10:25 am.

He gets to school 45 minutes later.

What time does he arrive at school?



[2 marks]

18

[2016]

Complete each sentence using a number from the list below.

120 240 600 1,440 3,600 6,000

There are

3,600

seconds in an hour.

 $\rightarrow 1 \times 60 \times 60$

There are

1,440

minutes in a day.

 $\rightarrow 1 \times 24 \times 60$

[2 marks]

19

[2015]

Liam hires a bike.

He has to return it by 3 pm.

The time is 2:25 pm.

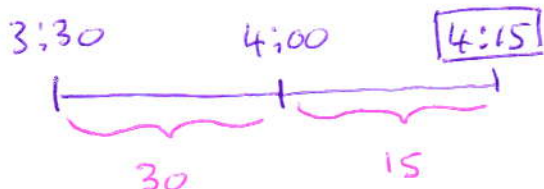


How many minutes has he got left?

**35** minutesAmy hires a bike for **45 minutes**.

She takes the bike out at 3:30 pm.

At what time must she return the bike?

**4:15** pm

[2 marks]

This table shows the opening times of a pet clinic.

[2010]

  Pet Clinic  		
Monday	10am to 4:30pm	[6½]
Tuesday	10am to 4:30pm	[6½]
Wednesday	Closed all day	[0]
Thursday	10:30am to 2:30pm	[4]
Friday	1pm to 6:30pm	[5½]
Saturday	10am to 5:30pm	[7½]
Sunday	Closed all day	[0]

How many hours is the clinic open on Thursday?



4 hours

On which day is the clinic open for the longest time?



SATURDAY

Liam takes his dog to the clinic on Saturday.

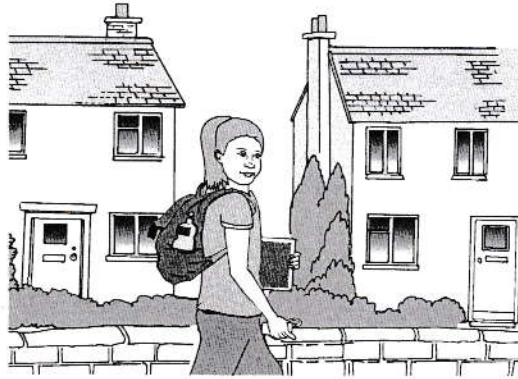
He arrives at 9:25 am.

How many minutes is it before the clinic opens?



35 minutes

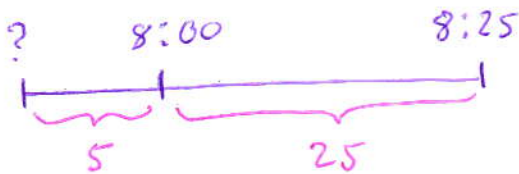
[2 marks]



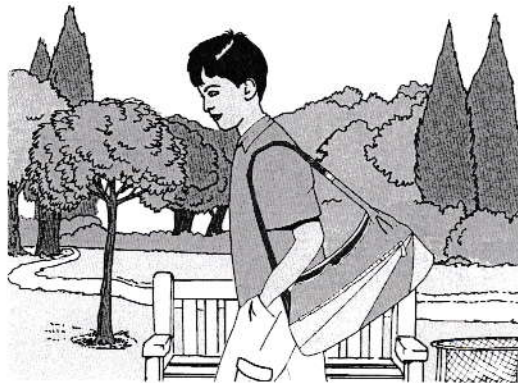
Holly takes **half an hour** to walk from home to school.

She arrives at school at 8:25 am.

At what time did she leave home?



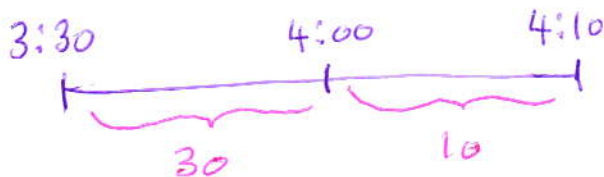
7:55 am



Dev leaves school at half past three.

He arrives home at ten past four.

How many minutes did it take him to get home?



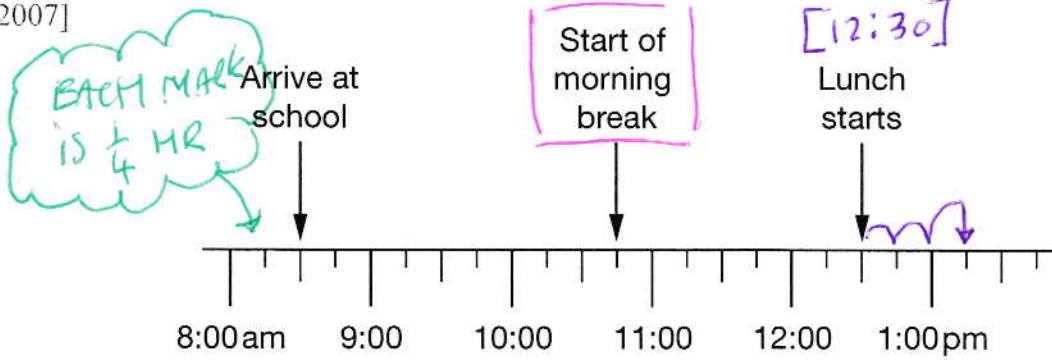
40 minutes

[2 marks]

22

Jamie makes a time line of part of his day.

[2007]



What time does Jamie's morning break start?



10:45 am

Lunch lasts for three-quarters of an hour.

What time does lunch finish?



1:15 pm

[2 marks]

23

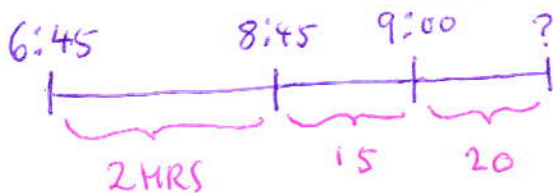
[2004]



A film starts at 6:45pm.

It lasts 2 hours and 35 minutes.

What time will the film finish?



9:20 pm

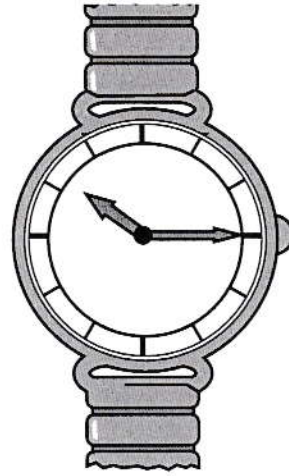
[1 mark]

24

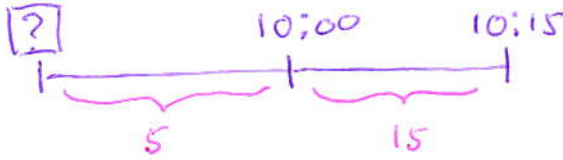
[2001]

This was the time on Selin's watch when she **set off** for a walk.

[10:15]

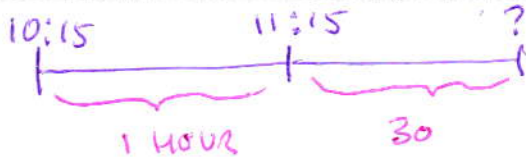


What time did the watch show **20 minutes before** this?



9:55

What time did it show an **hour and a half after** she set off for the walk?



11:45

[2 marks]

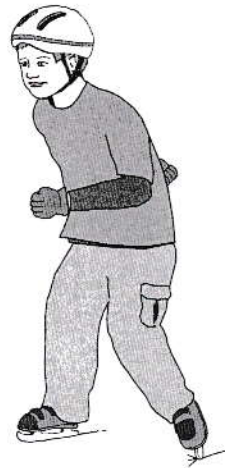
25

[2011]

Joe goes skating **every Saturday**.

He went skating on Saturday January 1st.

1 ST
8 TH
15 TH
22 ND
29 TH!



Altogether, how many times did Joe go skating in January?



5

[1 mark]

Some children ran in two races on sports day.

[2003]

Here are their times.

	100m race	800m race
Elise	15.9 seconds 1	3 minutes 02 seconds
Jake	19.7 seconds 5	2 minutes 58 seconds
Teri	16.8 seconds 2	3 minutes 01 seconds
Neil	17.1 seconds 3	2 minutes 59 seconds
Barry	18.4 seconds 4	2 minutes 57 seconds

5 SECONDS

Who finished the 100m race in **second** place?



TERI

In the 800m race, how many seconds did Barry finish ahead of Elise?

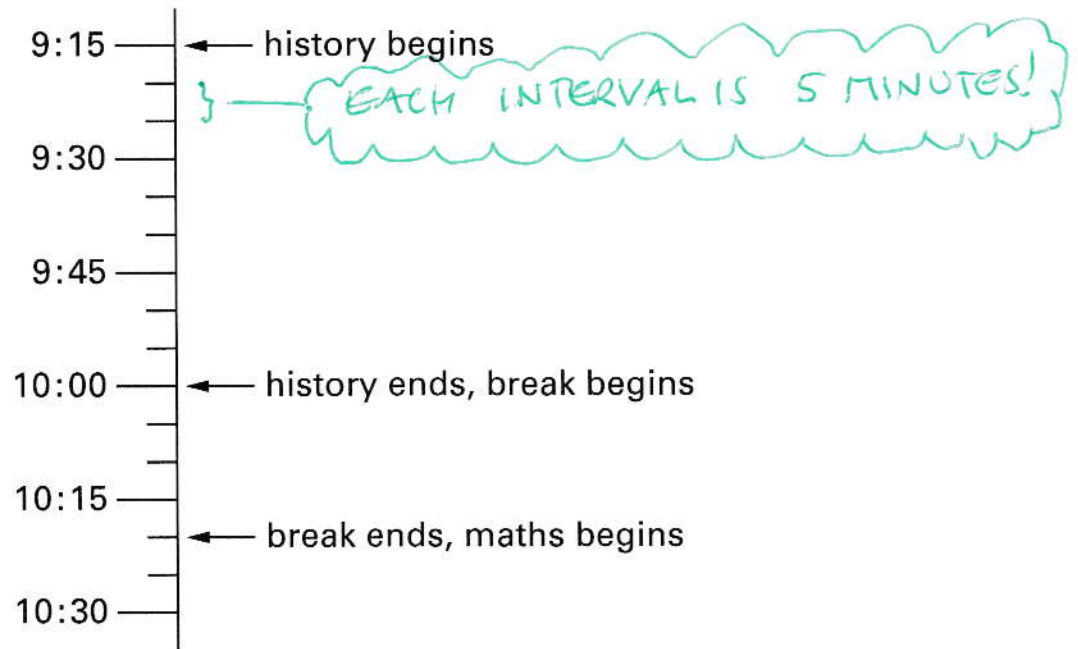


5 seconds

[2 marks]

Here is part of Nina's school timetable for Monday.

[Extra]



For how many minutes does Nina's **history** lesson last?

 45 minutes


For how many minutes does Nina's **break** last?


 20 minutes

Nina starts school at **9am**. She finishes school at **4pm**.

How many hours is Nina's school day?

9:00 12:00 4:00



 7 hours

[3 marks]

28

Look at these three time intervals.

[Extra]

1 hour 25 minutes

85 MINS

[125 minutes]

1.25 hours

75 MINS

Arrange them in **size order**, shortest first.

Then fill in the missing number of minutes.

[75]

1.25 HRS

shortest

[85]

1 HR 25 MIN

[125]

125 MIN

longest

difference in time is 50 minutes

[1 mark]

29

These are all times on the same morning.

[2012]

A 7:56 am

7:56 [4]

B quarter to eight

7:45 [2]

C six minutes to eight

7:54 [3]

D half past seven

7:30 [1]

Write the letters for the times in order, starting with the **earliest**.

D, B, C, A

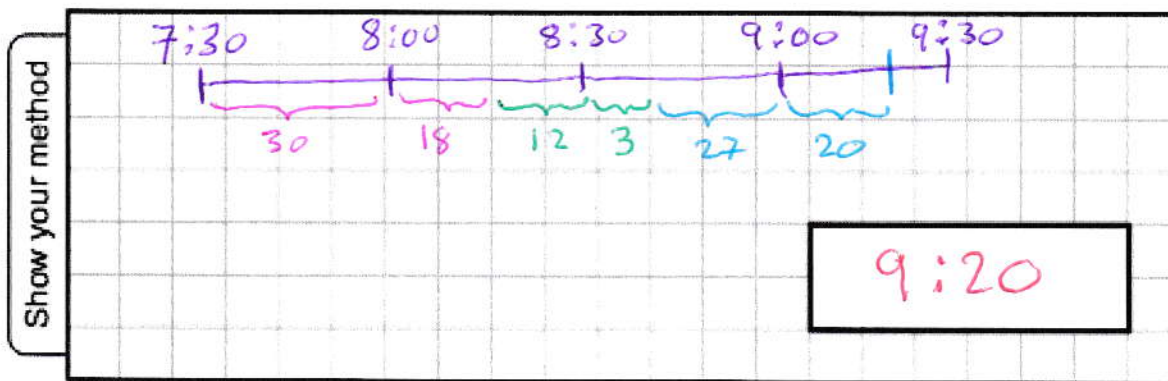
[1 mark]

Here is some information about a play.

[Extra]

Starts at 7:30 pm
First act lasts 48 minutes
Interval lasts 15 minutes
Second act lasts 47 minutes

At what time does the second act end?



ALTERNATE METHOD

[2 marks]

$$\begin{array}{r}
 48 \\
 15 \\
 + 47 \\
 \hline
 110 \text{ MINUTES} \\
 \hline
 \end{array}$$

